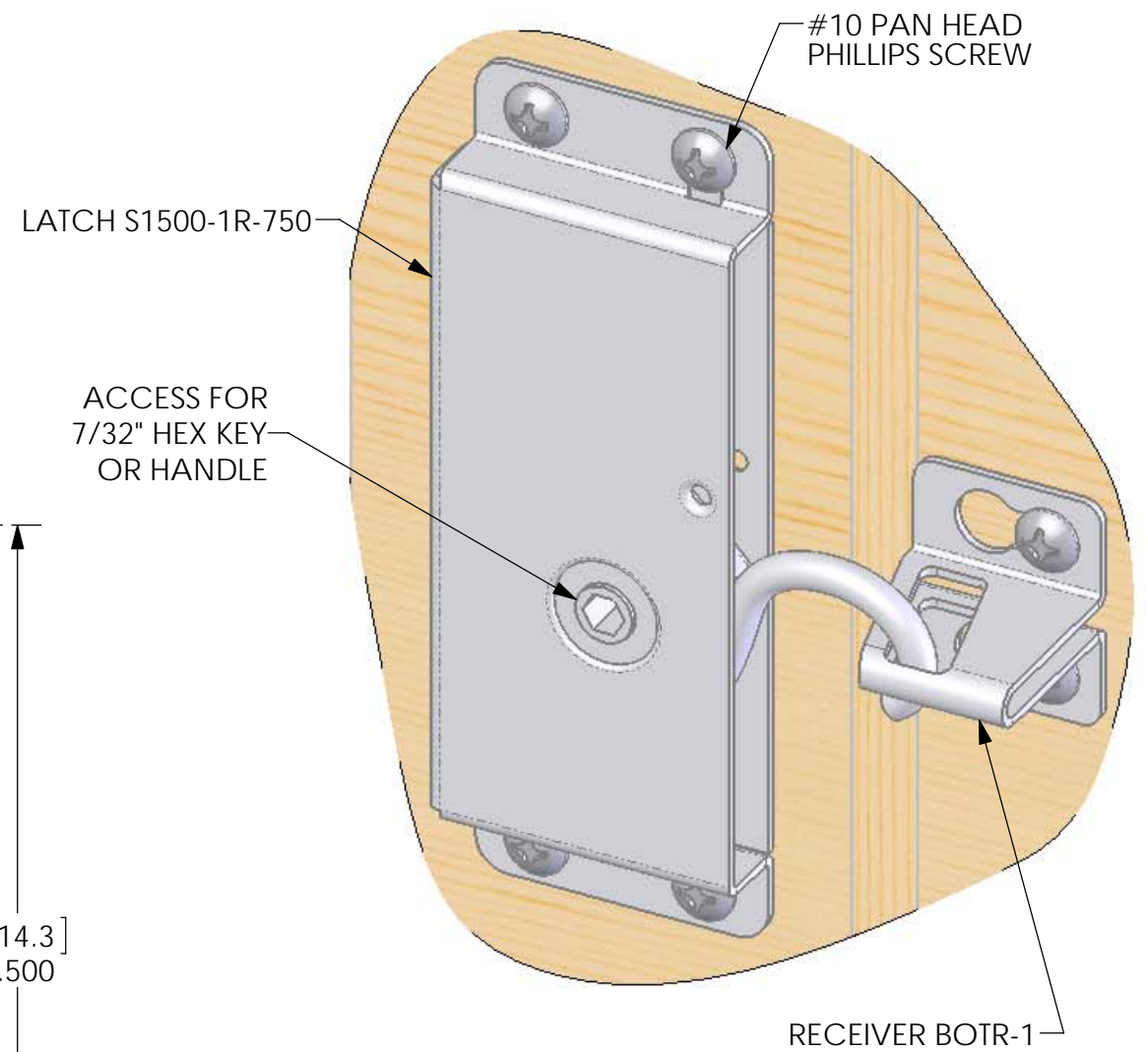
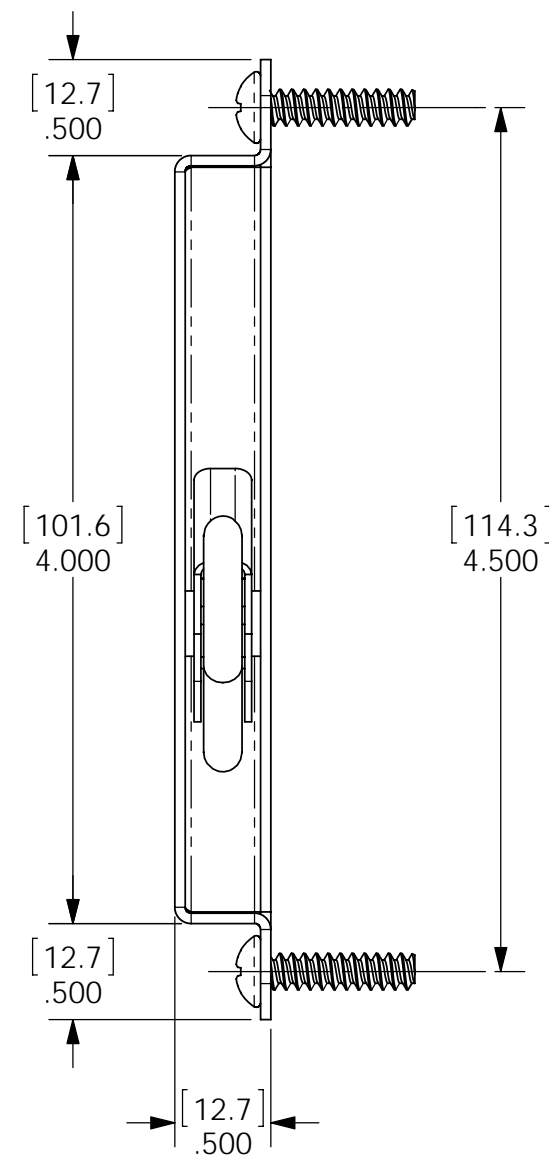
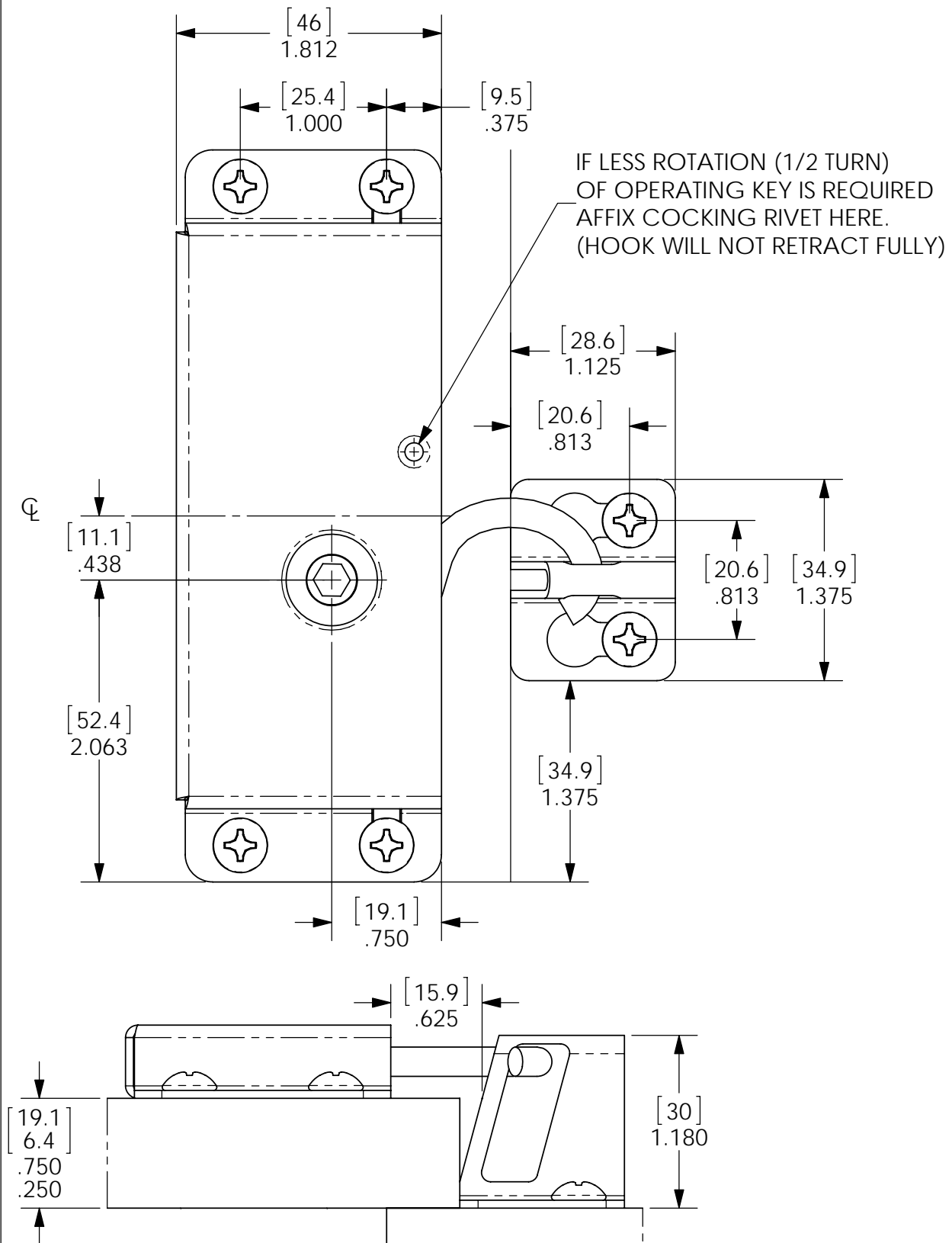


NOTES:

1. ALL DIMENSIONS ARE IN INCHES. DIMENSIONS SHOWN IN BRACKETS ARE IN MM FOR REFERENCE ONLY.
2. MOUNTS TO WOOD AND MASONRY SURFACES.
3. ACCEPTS SHUTTER PANEL THICKNESS 1/4" [6.4mm] TO 3/4" [19mm].
4. MINIMUM RECOMMENDED SHUTTER PANEL THICKNESS 5/8" [16mm].



SHUTTERUP
TYPE 1 LATCH
BIG 'OT' RECEIVER
SURFACE MOUNT

No. TDS 207-1A1

Scale 1:1

03-14-2014

Sheet 1 of 1

Size
B